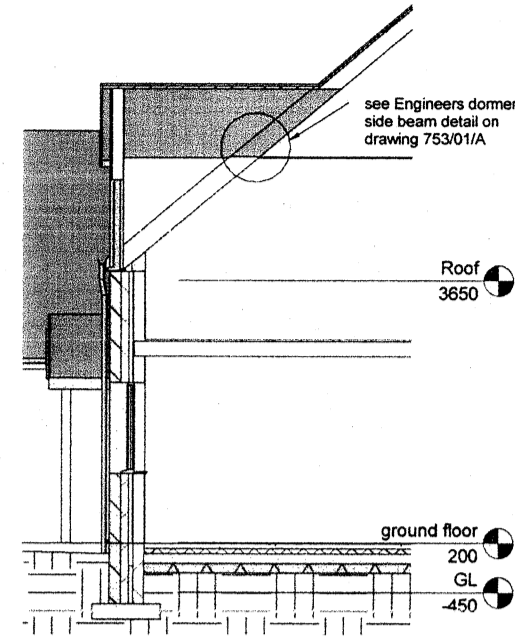
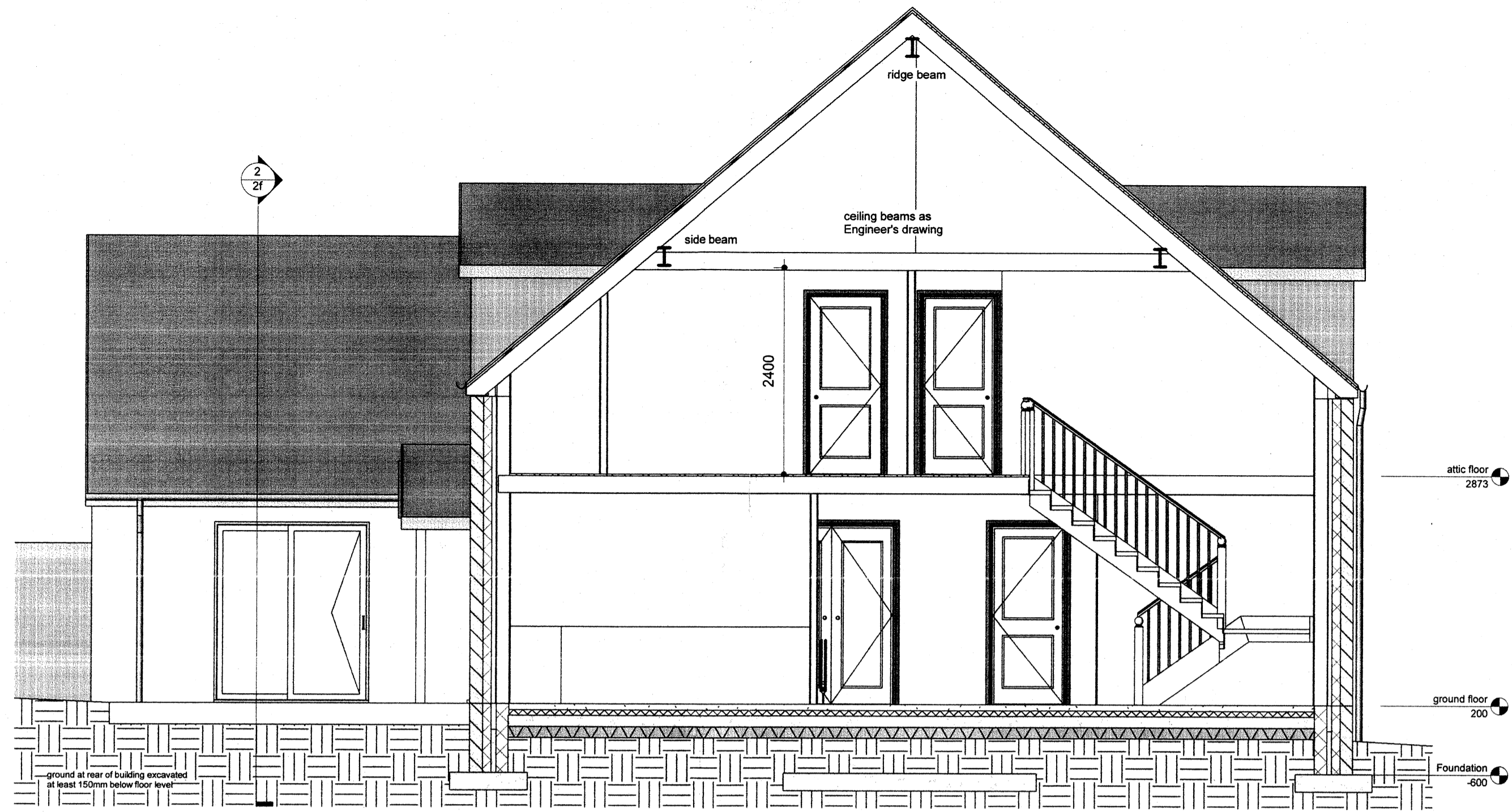


2 Section 2
1:50

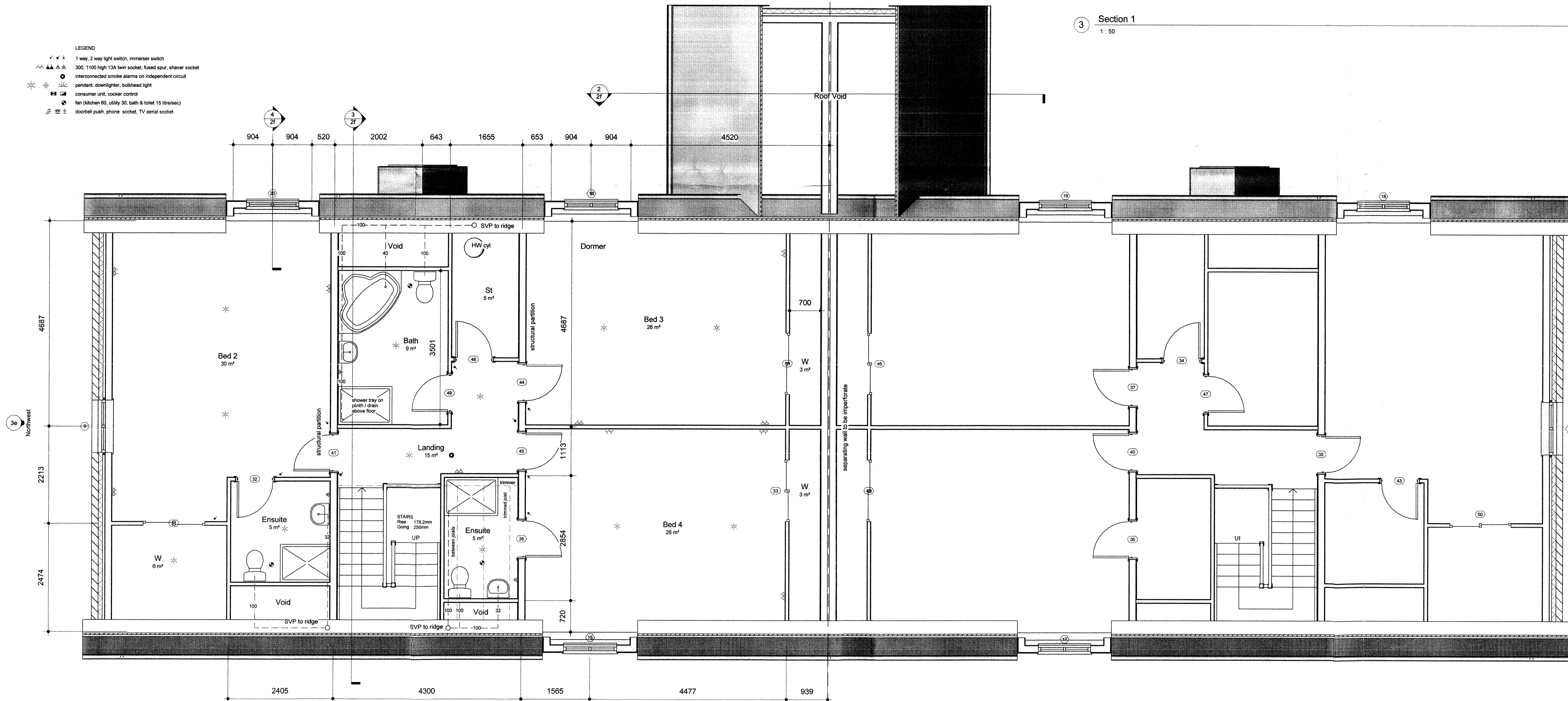


4 Section 3
1:100



3 Section 1
1:50

- LEGEND
- 1 way, 2 way light switch, immenser switch
 - 300, 1100 high 13A twin socket, fused spur, shaver socket
 - interconnected smoke alarms on independent circuit
 - pendant, downlighter, bulkhead light
 - consumer unit, cooker control
 - fan (kitchen 60, utility 30, bath & toilet 15 litre/sec)
 - doorbell push, phone socket, TV aerial socket



1 attic floor
1:50

HOUSE 6

HOUSE 7

Houses 6 and 7
symmetrical about
centreline

ARGYLL AND BUTE COUNCIL
APPROVED
As Relative to Warrant No. 07/COU/1620
Angus J. Gilmore
Head of Planning
Date: 13 MAR 2008

Job 551B Sheet 2f
Client A Simpson
Project Demolition of Barn and erection of two Houses at Carnis Eskan Farm, Helensburgh

Iain Dawson
Architecture
10 Arkwrights Way, Paisley, PA1 2NX
tel & fax 0141 887 1130 www.idawson.co.uk info@idawson.co.uk